



TH	THAILAND
----	----------

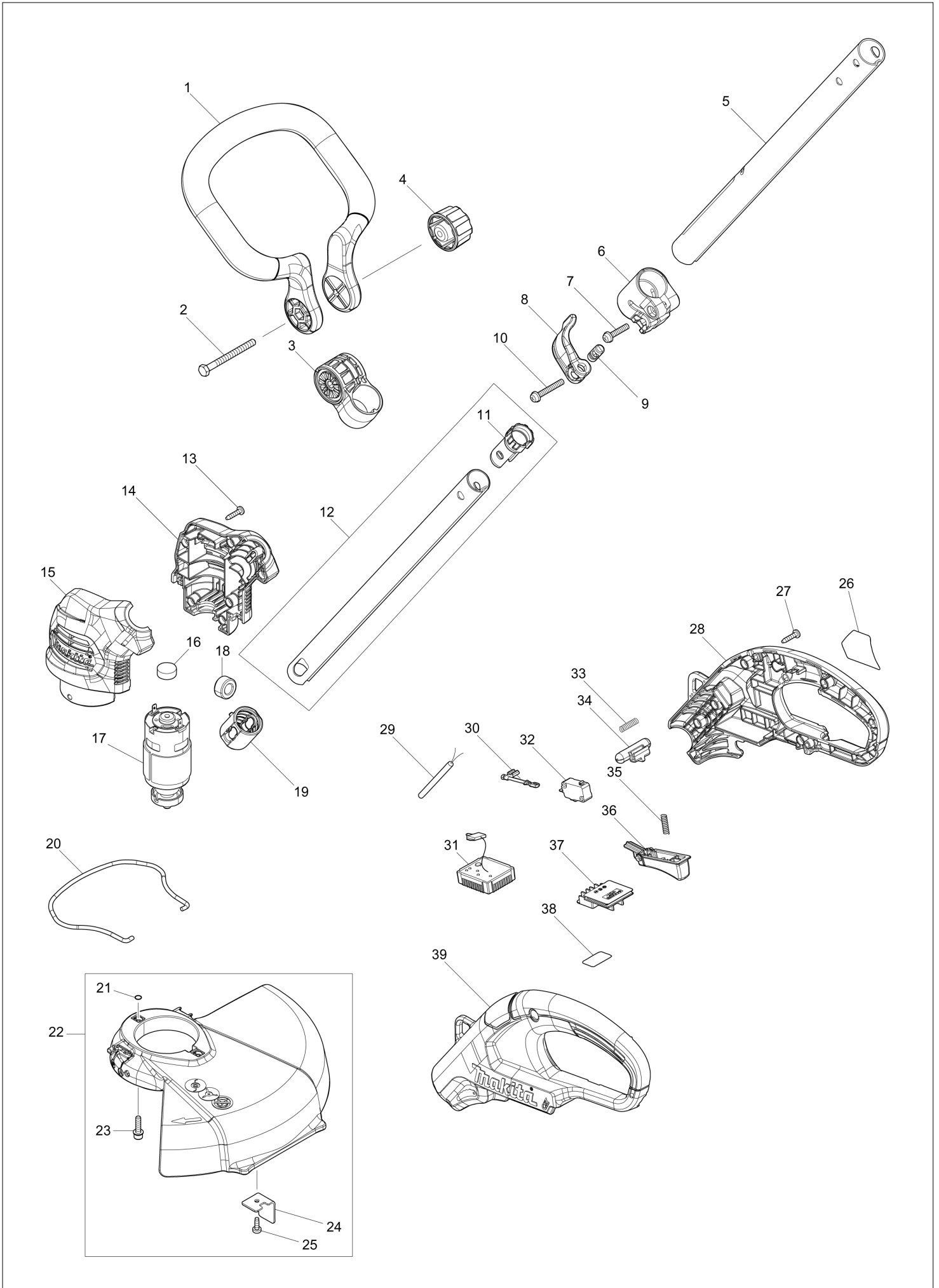
Diagram / Parts List

UR100D

CORDLESS GRASS TRIMMER



(TH) UR100D / CORDLESS GRASS TRIMMER



TH	THAILAND
-----------	-----------------

UR100D / CORDLESS GRASS TRIMMER

Item	Sub	Parts No.	Parts Description	Qty	I/C	E/C No.	Close No.	Remark
001		458505-8	FRONT GRIP	1				
002		921387-6	HEX. BOLT M6X65	1				
003		458260-2	GRIP HOLDER	1				
004		264072-1	THUMB NUT M6	1				
	C10	931302-2	HEX. NUT M6	1		Y08676		
005		144939-8	PIPE 28 COMPLETE A	1				
	C10	808723-2	CAUTION LABEL	1				
	C20	816F56-7	CAUTION LABEL	1				
006		458256-3	SLEEVE	1				
	C10	252103-8	HEX. LOCK NUT M5-8	2				
007		911243-8	PAN HEAD SCREW M5X25	1				
008		458257-1	LEVER	1				
009A		319667-6	PIN 9	1			C2585	
009B		319667-6	PIN 9	1			C2585	
009C		319667-6	PIN 9	1			C2585	
009D		319667-6	PIN 9	1			C2585	
009-1A		327190-7	PIN9	1	X	C2585		
009-1B		327190-7	PIN9	1	X	C2585		
009-1C		327190-7	PIN9	1	X	C2585		
009-1D		327190-7	PIN9	1	X	C2585		
009-1E		327190-7	PIN9	1				
010		911258-5	PAN HEAD SCREW M5X35	1				
011		458258-9	PIPE CAP	1				
012		135952-7	PIPE24 ASS'Y	1				
	D10		INC. 11					
013		266326-2	TAPPING SCREW 4X18	6				
014A		183H91-5	MOTOR HOUSING SET	1				
014B		183H91-5	MOTOR HOUSING SET	1				
014C		183H91-5	MOTOR HOUSING SET	1				
014D		183H91-5	MOTOR HOUSING SET	1				
014E		183T32-3	MOTOR HOUSING SET	1				
	C10	346275-0	PLATE	2				
	D10		INC. 15					
015A		183H91-5	MOTOR HOUSING SET	1				
015B		183H91-5	MOTOR HOUSING SET	1				
015C		183H91-5	MOTOR HOUSING SET	1				
015D		183H91-5	MOTOR HOUSING SET	1				
015E		183T32-3	MOTOR HOUSING SET	1				
	C10	346275-0	PLATE	2				
	D10		INC. 14					
016		421940-3	CAP	1				
017		629317-8	DC MOTOR	1				
019		424567-8	RUBBER SLEEVE 24	1				
020		327065-0	WIRE GUARD	1				
021		213023-1	O RING 4	2				
022		135950-1	PROTECTOR ASS'Y	1				
	D10		INC. 21,23-25					
023		911139-3	PAN HEAD SCREW M4X20 WG	2				
024		346555-4	CORD CUTTER	1				
025		266427-6	TAPPING SCREW 4X12	1				
026		854A93-3	UR100D NAME PLATE	1				
027		266326-2	TAPPING SCREW 4X18	6				
028A		183H89-2	HANDLE SET	1				
028B		183H89-2	HANDLE SET	1				
028C		183H89-2	HANDLE SET	1				
028D		183H89-2	HANDLE SET	1				
028E		183T33-1	HANDLE SET	1				
	C10	263002-9	RUBBER PIN 4	4				
	D10		INC. 39					
029		699113-8	POWER SUPPLY CORD UNIT	1				
030		632L22-0	LEAD UNIT	1				
031		620780-8	CONTROLLER	1				
032		650744-8	SWITCH D3V-16-3C26	1				
033		231473-8	COMPRESSION SPRING 4	1				
034A		452438-9	LOCK OFF BUTTON	1			C2585	

A:UR100DZ(N)
 B:UR100DWYE(H)
 C:UR100DWM(E)
 D:UR100DZX(N)
 E:UR100DSAP(H)

Interchange
 O : Yes
 X : No
 < : the new part can be substituted for the current.
 > : the current part can be substituted for the new.
 S : Interchangeable as a set.

TH

THAILAND

UR100D / CORDLESS GRASS TRIMMER

Item	Sub	Parts No.	Parts Description	Qty	I/C	E/C No.	Close No.	Remark
034B		452438-9	LOCK OFF BUTTON	1			C2585	
034C		452438-9	LOCK OFF BUTTON	1			C2585	
034D		452438-9	LOCK OFF BUTTON	1			C2585	
034-1A		458900-2	LOCK OFF BUTTON	1	X	C2585		
034-1B		458900-2	LOCK OFF BUTTON	1	X	C2585		
034-1C		458900-2	LOCK OFF BUTTON	1	X	C2585		
034-1D		458900-2	LOCK OFF BUTTON	1	X	C2585		
034-1E		458900-2	LOCK OFF BUTTON	1				
035		231473-8	COMPRESSION SPRING 4	1				
036		458259-7	SWITCH LEVER	1				
037		644813-5	TERMINAL	1				
038		854B01-0	UR100D SERIAL NO. LABEL	1				
039A		183H89-2	HANDLE SET	1				
039B		183H89-2	HANDLE SET	1				
039C		183H89-2	HANDLE SET	1				
039D		183H89-2	HANDLE SET	1				
039E		183T33-1	HANDLE SET	1				
	C10	263002-9	RUBBER PIN 4	4				
	D10		INC. 28					
A01		125516-5	BAND ASSEMBLY	1				
A02		783202-0	HEX. WRENCH 4	1				
A03		831304-7	ACCESSORY BAG	1				
A04A		198853-0	TRIMMER HEAD 75-M8R SET M	1				
A04B		198853-0	TRIMMER HEAD 75-M8R SET M	1				
A04C		198853-0	TRIMMER HEAD 75-M8R SET M	1				
A04E		198853-0	TRIMMER HEAD 75-M8R SET M	1				
A05A		198859-8	NYLON CORD 1.65-15M SET M	1				
A05B		198859-8	NYLON CORD 1.65-15M SET M	1				
A05C		198859-8	NYLON CORD 1.65-15M SET M	1				
A05E		198859-8	NYLON CORD 1.65-15M SET M	1				
A06D		198847-5	PLASTIC BLADE 230 SET M	1			C4000	
A06-1D		198848-3	PLASTIC BLADE 230 SET ME	1	<	C4000		
A07D		198850-6	PLASTIC BLADE BLADE SET M	1				
A08A		195246-2	SAFETY GOGGLE	1		C8414		
A08B		195246-2	SAFETY GOGGLE	1		C8414		
A08C		195246-2	SAFETY GOGGLE	1		C8414		
A08D		195246-2	SAFETY GOGGLE	1		C8414		
A08E		195246-2	SAFETY GOGGLE	1				
A09B		456128-6	BATTERY COVER	2				
A09C		456128-6	BATTERY COVER	2				
A09E		456128-6	BATTERY COVER	1				
A10B		***DC10WD	DC10WD BATTERY CHARGER	1				
A10C		***DC10WD	DC10WD BATTERY CHARGER	1				
A10E		***DC10SB	DC10SB BATTERY CHARGER	1				
A11B		197393-5	BATTERY BL1016 SET	2			C2691	
A11C		197406-2	BATTERY BL1041B SET	2			C2801	
A11-1B		199291-9	BATTERY BL1016 SET	2	<	C2691	D0163	
A11-1C		199289-6	BATTERY BL1041B SET	2	<	C2801	D0165	
A11-2B		199291-9	BATTERY BL1016 SET	2	<	D0163		
A11-2C		199289-6	BATTERY BL1041B SET	2	<	D0165		
A11-2E		199290-1	BATTERY BL1021B SET	1				

A:UR100DZ(N)
 B:UR100DWYE(H)
 C:UR100DWM(H)
 D:UR100DZX(N)
 E:UR100DSAP(H)

Interchange
 O : Yes
 X : No
 < : the new part can be substituted for the current.
 > : the current part can be substituted for the new.
 S : Interchangeable as a set.